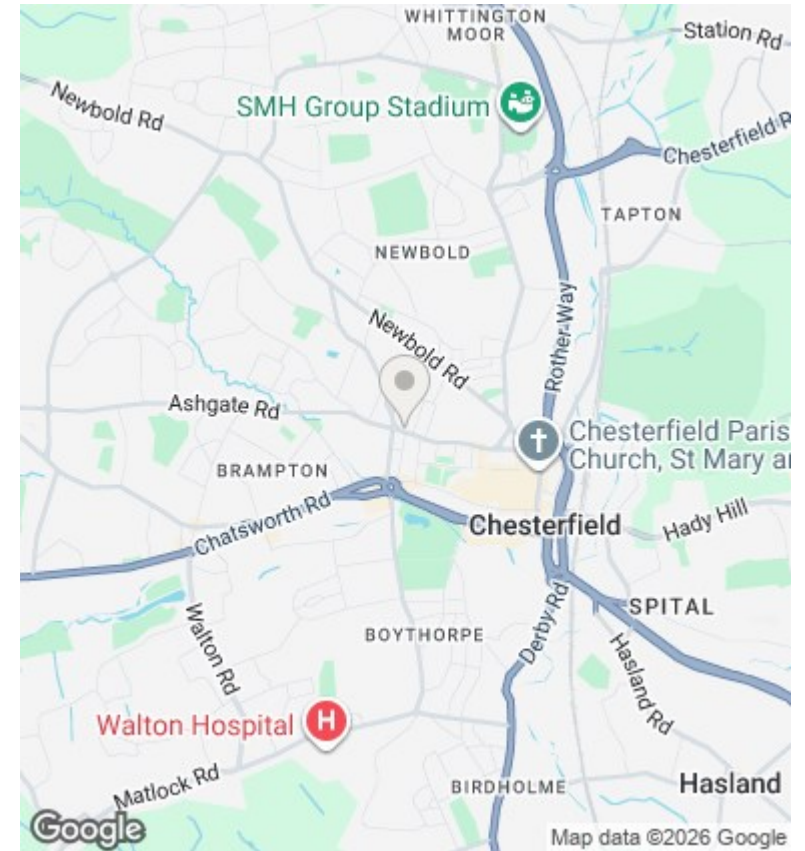
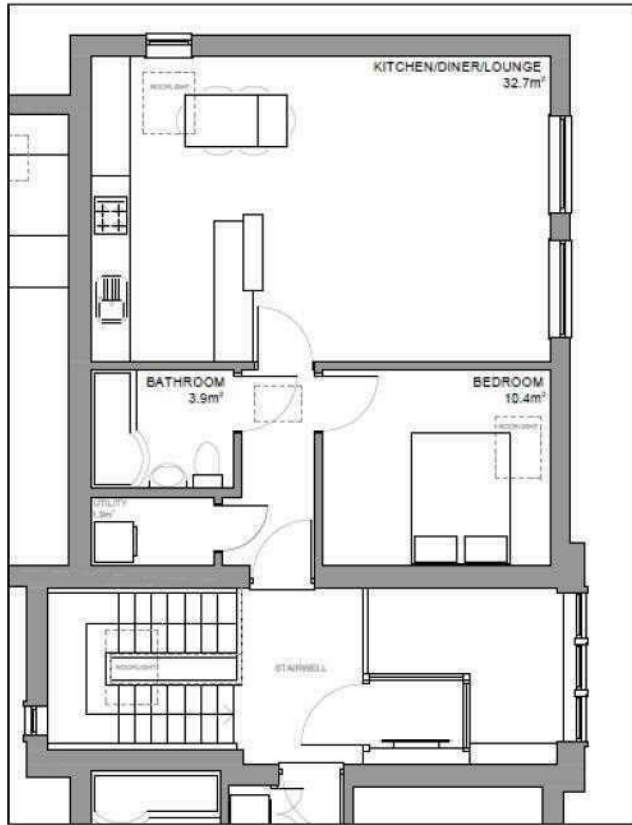




Flat 4, Moss Court Saltergate, Chesterfield, S40 1GE

£775 Per Month

- Second floor apartment
- Open plan living/dining area
- Modern bathroom with shower enclosure
- Close to Town Centre
- 582 sq ft / 54 sq m
- Fully fitted kitchen with breakfast bar
- Utility space
- Entrance Intercom system
- Double Bedroom
- UNFURNISHED



Directions

Viewings

Viewings by arrangement only. Call 01246 275 559 to make an appointment.

Council Tax Band

A

EPC Rating:

B

Energy Efficiency Rating		Current	Potential
<i>Very energy efficient - lower running costs</i>			
(92 plus) A			
(81-91) B		82	82
(69-80) C			
(55-68) D			
(39-54) E			
(21-38) F			
(1-20) G			
<i>Not energy efficient - higher running costs</i>			
England & Wales		EU Directive 2002/91/EC	